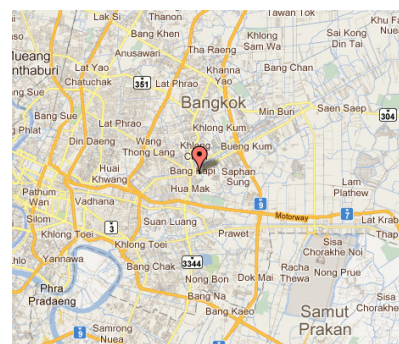


The recent focus of attention on water use and wastewater discharge from organizations such as *Greenpeace* has resulted in a renewed effort by Brands and facilities to fully understand their roles in ecological sustainability. The H2O\*Insight team remains committed to help clients pursue responsible environmental stewardship within their company's business framework. H2O\*Insight continues to provide the leading and best solution for managing a global water program and we, at H2O\*Insight, continue to concentrate our efforts to improve the effectiveness and functionality of this water management tool.

To that point, I'd like to highlight some recent enhancements made to H2O\*Insight:

### 1. The integration of graphical mapping –

Through the use of GeoCoding technology, H2O\*Insight can accurately indicate facility locations on global maps. This significant development reduces error, prevents redundancies, and streamlines the process of locating a specific site. The addition of filtering technology in the near future will allow Brands to graphically represent facility locations that meet precise, definable criteria.



### 2. The addition of multi-language support for facilities –

Facilities now have the capacity to select in real-time the appropriate language of the water questionnaire to be presented to their staff. This improvement eliminates lengthy translation delays, reduces misunderstandings, and provides a beneficial ease of use.

水的单元平均成本是多少？（请注明，例如：为每立方米为美元\$）

生产用水：平均流入工厂用于制造用途的水每日里水有多少？

生产废水：从这个工厂排出的加工废水平均每日的水量是多少？

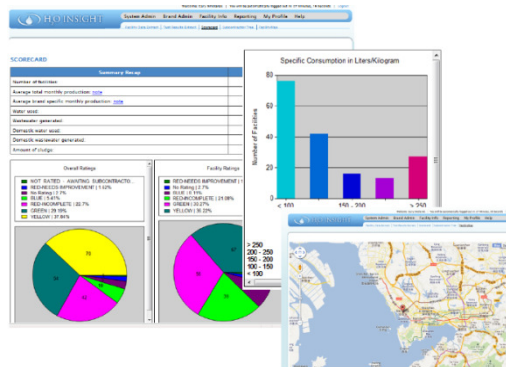
家庭用水：平均每日流入工厂的住宅用途的水，水量有多少？（食堂，浴室和/或宿舍）

生活污水/污水处理：平均每日所产生的生活污水有多少？

这家工厂，通常每年有多少天的运作？

### 3. The enhancement of data reporting capabilities

Collection of the significant data is only one aspect of a well-managed water program. An equally essential feature is the capacity to report, analyze, and create comprehensive action plans based on the compiled information set. We have enhanced the reporting capabilities of H2O\*Insight with stronger data extracts, more detailed program scorecards, and other in-depth analysis tools.





4. The **expansion of monitored information** - We continue to expand on the type of data that is tracked and analyzed within the system. This is a critical step in improving performance over time as well as a proactive response to possible future regulatory monitoring requirements. For example, H2O\*Insight now tracks enzyme utilization as an effort to expand the value and efficacy of the program.

Does this facility use enzymes in any processes?  
Please check all that apply.

<input type="checkbox"/> Enzymatic bioblast/biopolish in the dyebath	<input type="checkbox"/> Enzymatic bleach clean up
<input type="checkbox"/> Enzymatic bioblast/biopolish and bleach clean up in the dyebath	<input type="checkbox"/> Enzymatic scouring
<input type="checkbox"/> Enzymatic desizing and denim abrasion in one step	<input type="checkbox"/> Other

5. The **presentation of facility/subcontractor relationships** - Tracking the interaction of a global supply chain is a difficult but crucial task. For a company to understand its overall water footprint it must be aware of and monitor *all* facilities within its global supply chain, including offices, factories, and suppliers. To aid in this process, H2O\*Insight now has the capability to graphically illustrate relationships between facilities. This new and innovative feature makes it readily apparent which facility uses subcontractors and which facility is a subcontract.

Facility Name	Average Daily Influent Volume	Average Daily Effluent Volume
Facility One (main office)	0.00	0.00
-- Factory Two	25.00	25.00
--- Factory Three	1700.00	1600.00
---- GJS Inc	223.00	78.00
---- ABC Factory	60.00	50.00
----- abc sub	25.00	25.00
----- sub515	67.00	66.00
----- sub524	300.00	100.00
----- sub527	300.00	250.00
----- sub610	1000.00	900.00

**Questions about H2O\*Insight?**  
**Contact Gary Smolarek, C\*Insight, Inc.**  
**716.250.7460**

or

Visit [www.cinsight.net](http://www.cinsight.net) to learn more about H2O\*Insight and discover how to leverage industry collaboration and best practices in the area of water management.